



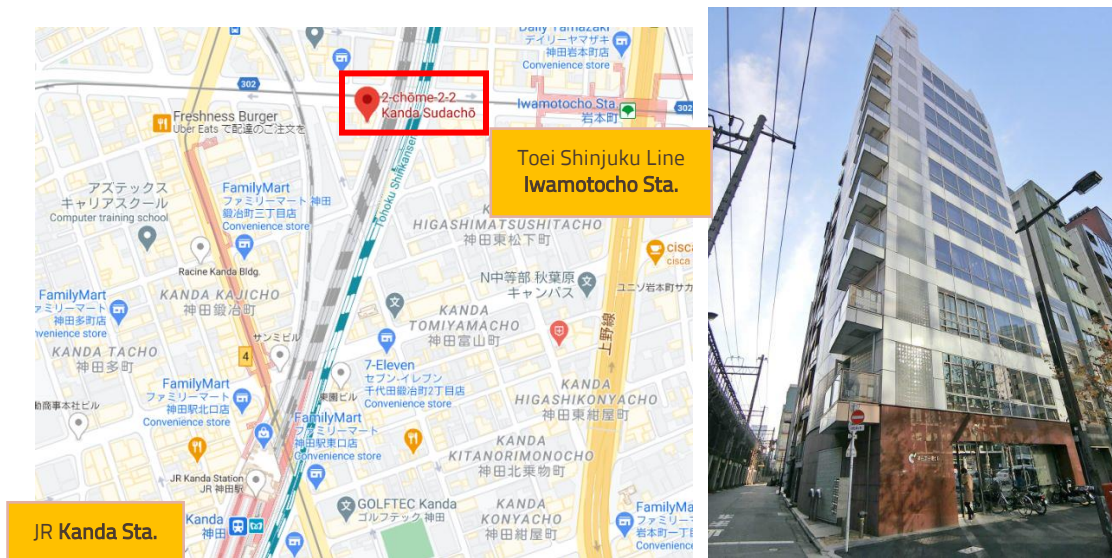
## TRAVEL INSTRUCTION TO MODELON TOKYO OFFICE

### VISITING ADDRESS

Modelon K.K.

Kanda-Sudacho Building 7F, 2-2-2, Kanda-Sudacho, Chiyoda-ku, Tokyo 101-0041, Japan

TEL : +81-3-3525-8934/+81-3-3525-8935



Map (Left), Exterior of building (Right)

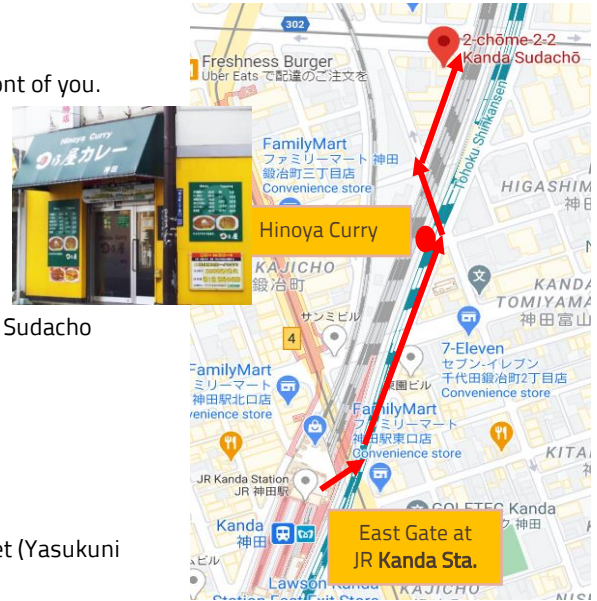
### ACCESS

To reach our office by public transportation, there are 5 nearest stations (see the next page).

When you reach the Kanda-Sudacho Building, go straight into the building, and take the elevator to the 7th floor.

## 6 mins walk from Kanda Station (JR Lines)

1. Exit the East Gate at the JR Kanda Station and cross the light in front of you.
2. Go straight north along the railroad track (Kanda Fureai Dori).
3. When you see "Hinoya Curry" on your left, turn left diagonally to the left and go under the railroad tracks.
4. After passing under the railroad track, turn right and go straight along the railroad track to the main street (Yasukuni Dori).
5. The building immediately after turning left at the end is the Kanda Sudacho Building.



## 3 mins walk from Kanda Station (Tokyo Metro Ginza Line)

1. After exiting Exit 6, turn right and then turn right on the main street (Yasukuni Dori).
2. Go straight along Yasukuni Dori, and the building on your right before the second railroad track is the Kanda Sudamachi Building.



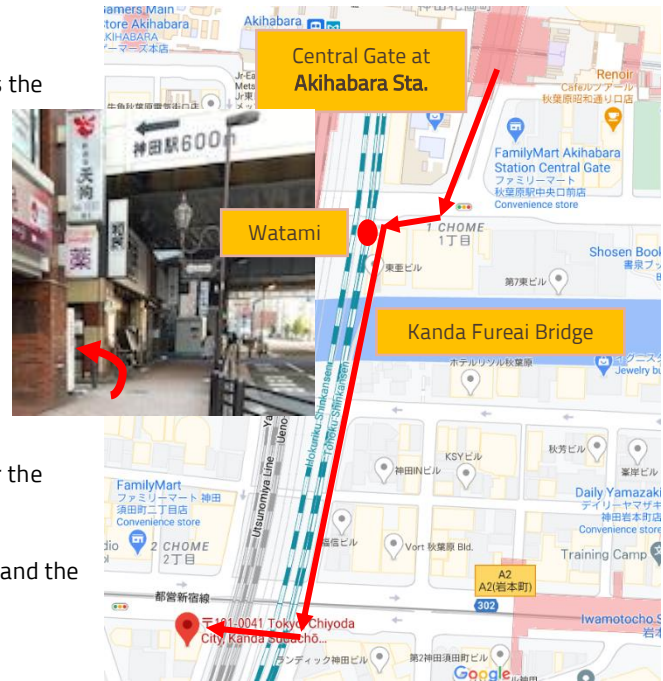
## 2 mins walk from Iwamotocho Station (Toei Shinjuku Line)

1. After exiting Exit A1, turn left and go straight along the main street (Yasukuni Dori).
2. The building on your left after passing under the overpass is the Kanda Sudacho Building.



## 7 mins from Akihabara Station (JR Lines)

1. Exit the Central Gate at Akihabara station, turn right, cross the traffic light at the end, and then turn right.
2. You will find an izakaya "Watami" in front of the JR overpass, so turn left toward the narrow alley next to Watami.
3. Go straight and you will see "Kanda Fureai Bridge", so cross the Kanda River.
4. Walk straight along the railroad track, and when you reach the big street (Yasukuni Dori), cross the signal under the overpass.
5. Cross the traffic light, turn right, pass under the overpass, and the building on your left is the Kanda Sudacho Building.



## 7 mins from Akihabara station (Tokyo Metro Hibiya Line)

1. After exiting Exit 5, turn right and cross the Kanda River through Izumibashi (along Showa-dori).
2. Cross the bridge, cross the second traffic light (Iwamotocho) and turn right.
3. Continue straight ahead (Yasukuni Dori), pass under the overpass, and the building on your left is the Kanda Sudacho Building.

